

# GETTING THE BEST OUT OF YOUR CENTRAL HEATING



1

The boiler in the property may look different, but the idea is the same. Follow these instructions to make sure you are using it correctly and in the most efficient way. In the summer months, turn to the tap symbol for hot water only. When it is colder outside, turn to tap and radiator symbol for hot water and heating.



2

**DO NOT** turn the boiler on and off using the electricity switch on the wall. To turn the boiler off - (no hot water or heating) - turn the far right hand dial on the front of the boiler to the OFF position. Please note that using the electricity switch to operate the boiler damages it and replacement boilers cost over £1500. Unipol will pass on the cost of replacing boilers if they are damaged through mis-use.



3

**Heating on all the time** - On the Thermostat located on the wall usually in a hallway/corridor. Move the slider switch on the thermostat controls to the MAN (manual) position. This will mean the boiler will operate using the thermostat program indicated on the digital thermostat. You can increase and decrease the temperature by pressing the Temperature Change Buttons on the front of the thermostat (These are indicated by the up and down arrows).



**Heating to come on and off at different times during 24hours** - move the slider switch on the thermostat to the AUTO (automatic) position. The thermostat will follow the temperature program (default or personalised). Operating the temperature in this mode is the best way to maintain a high level of temperature comfort whilst maximising your energy savings. If you require further instructions on how to program your thermostat to operate at convenient times for yourself please contact a member of Unipol Staff who can provide instructions on how to do so.

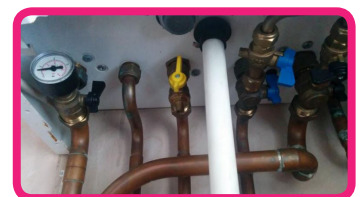
4

Some of the radiators in your property will have controls (TRV's). You can turn your radiator heat up or down usually the hallway or bathroom do not have them, but this is how the system works. A number of your radiators are bypass radiators and therefore are always on if your heating is on. **DO NOT** turn all your radiators off and leave your boiler on. This is wasting gas and costing you money.



5

If the boiler pressure drops then the heating and hot water will not work. This is one of the most common causes of loss of heating or hot water. There is a pressure gauge located underneath the boiler on the left hand side. Boilers operate at 1.5 bar. Unipol can usually walk you through how to re-pressurise the boiler over the phone. Alternatively please watch the YouTube video on how to do so ([www.youtube.com/watch?v=SHupvqk27H4](https://www.youtube.com/watch?v=SHupvqk27H4)). All boilers usually need pressurising 1-2 times a year. If it requires re-pressurising more frequently, please contact Unipol as there may be a fault.



unipol®

the home of student housing